

Application Status

Approved

* Approved by DCA. Approvals by DCA shall be reviewed and ratified by the POC and/or the Commission if necessary.

Comments
Archived

Product Manufacturer	Eastern Architectural Systems
Address/Phone/Email	10030 Bavaria Road

fbc@buildingdrops.com

Authorized Signature

AJ Giacalone
fbcc@buildingdrops.com

Technical Representative
Address/Phone/Email

Quality Assurance Representative
Address/Phone/Email

Category	Windows
Subcategory	Fixed

Compliance Method	Certification Mark or Listing
<p>1. UL Listed: The product is listed by Underwriters Laboratories (UL) for use in wet or damp locations, and meets specific UL requirements for safety.</p> <p>2. ETL Listed: The product is listed by ETL (ETL Intertek) for use in wet or damp locations, and meets specific ETL requirements for safety.</p> <p>3. IP65 or IP67 Rated: The product has an Ingress Protection (IP) rating of at least IP65 or IP67, indicating it is designed to be waterproof and dustproof.</p> <p>4. CE Marked: The product is marked with the CE (Conformé Européen) mark, indicating it meets the requirements of the European Union's Low Voltage Directive (LVD) and the EMC Directive.</p> <p>5. RoHS Compliant: The product is compliant with the Restriction of Hazardous Substances (RoHS) directive, meaning it does not contain certain hazardous materials.</p>	<p>1. UL Listed: Look for the UL Listed mark on the product or its packaging.</p> <p>2. ETL Listed: Look for the ETL Listed mark on the product or its packaging.</p> <p>3. IP65 or IP67 Rated: Look for the IP65 or IP67 rating on the product or its packaging.</p> <p>4. CE Marked: Look for the CE mark on the product or its packaging.</p> <p>5. RoHS Compliant: Look for the RoHS Compliant mark on the product or its packaging.</p>

Certification Agency
Validated By
National Accreditation & Management Institute,
National Accreditation & Management Institute,

Referenced Standard and Year (of Standard)

Standard	Year
AAMA/WDMA/CSA 101/I.S.-2/A440	2005
ANSI/AAMA/NWWDA 101/I.S.2	1997
ASTM E1886	2002
ASTM E1996	2002
TAS 201	1994
TAS 202	1994
TAS 203	1994

Equivalence of Product Standards
Certified By

Product Approval Method Method 1 Option A

Date Submitted 05/31/2011

Date Validated 07/01/2011

Date Pending FBC Approval 07/11/2011

Date Approved

Summary of Products		
FL #	Model, Number or Name	Description
14608.1	Series "1000" Aluminum	Fixed Window
Limits of Use Approved for use in HVHZ: No Approved for use outside HVHZ: Yes Impact Resistant: No Design Pressure: +100/-130 Other: Configuration: O Max. Frame Size: W-60" H-48" Max. DLO Size: W-56" H-47" Glazing: 3/16" Tempered Glass		
14608.2	Series "1500" Aluminum	Fixed Window
Limits of Use Approved for use in HVHZ: No Approved for use outside HVHZ: Yes Impact Resistant: No Design Pressure: +100/-100 Other: Configuration: O Max. Frame Size: W-96" H-48" Glazing: 1/4" Tempered Glass		
14608.3	Series "FWI 2000" Aluminum	Fixed Window
Limits of Use Approved for use in HVHZ: Yes Approved for use outside HVHZ: Yes Impact Resistant: Yes Design Pressure: +90/-90 Other: Configuration: O Max. Frame Size: W-144" H-48" Glazing: Laminated 3/16" Heat Strengthened Glass/ 0.100" Soliura/ 3/16" Heat Strengthened Glass, Interlayer approved under NOA 09-0127.13		
14608.4	Series 1436 Vinyl	Fixed Window with Nailing Fin
Limits of Use Approved for use in HVHZ: No Approved for use outside HVHZ: Yes Impact Resistant: No Design Pressure: +80/-80 Other: Configuration: O Max. Frame Size: W-71.5" H-71.5" Max. DLO Size: W-66.88" H-66.88" Glazing: 1/6.5/16" Annealed Glass		
14608.5	Series 1446 Vinyl	Fixed Window with Flange
Limits of Use Approved for use in HVHZ: No Approved for use outside HVHZ: Yes Impact Resistant: No Design Pressure: +80/-80 Other: Configuration: O Max. Frame Size: W-74.5" H-72"		

Certification Agency Certificate
 FL14608_R0_C_CAC_N1006126.01.PDF
 Quality Assurance Contract Expiration Date 12/31/2014

Installation Instructions
 FL14608_R0_IL_EAS014.pdf
 Verified By: Alexis Spyrou, P.E. Florida P.E. 68101
 Created by Independent Third Party: Yes
 Evaluation Reports
 FL14608_R0_AE_PER_1329.pdf
 Created by Independent Third Party: Yes

Certification Agency Certificate
 FL14608_R0_C_CAC_N1006126.01.PDF
 Quality Assurance Contract Expiration Date 04/30/2015

Installation Instructions
 FL14608_R0_IL_EAS011.pdf
 Verified By: Alexis Spyrou, P.E. Florida P.E. 68101
 Created by Independent Third Party: Yes
 Evaluation Reports
 FL14608_R0_AE_PER_1326.pdf
 Created by Independent Third Party: Yes

Certification Agency Certificate
 FL14608_R0_C_CAC_09-0127.13.pdf
 FL14608_R0_C_CAC_N1009023.01.pdf
 Quality Assurance Contract Expiration Date 02/28/2014

Installation Instructions
 FL14608_R0_IL_EAS015_R1_SIGNED_AND_CERT.pdf
 Verified By: Alexis Spyrou, P.E. Florida P.E. 68101
 Created by Independent Third Party: Yes
 Evaluation Reports
 FL14608_R0_AE_PER_1330.pdf
 Created by Independent Third Party: Yes

Certification Agency Certificate
 FL14608_R0_C_CAC_N1010609.PDF
 Quality Assurance Contract Expiration Date 07/31/2014

Installation Instructions
 FL14608_R0_IL_EAS032_R1_SIGNED_AND_CERT.pdf
 Verified By: Alexis Spyrou, P.E. Florida P.E. 68101
 Created by Independent Third Party: Yes
 Evaluation Reports
 FL14608_R0_AE_PER_1348.pdf
 Created by Independent Third Party: Yes

Max. DLO Size: W-69.5" H-66.88" Glazing: I.G. 5/16" Annealed Glass		Verified By: Alexis Spyrou, P.E. Florida P.E. 68101 Created by Independent Third Party: Yes Evaluation Reports FI14608_R0_AE_PER_1349.pdf Created by Independent Third Party: Yes
14608.6	Series 2456 Vinyl Impact Rated	Fixed Window with Nailing Fin
Limits of Use Approved for use in HVHZ: No Approved for use outside HVHZ: Yes Impact Resistant: Yes Design Pressure: +50/-50 Other: Configuration: O Max. Frame Size: W-64" H-84" Max. DLO Size: W-58.5" H-79" Glazing: 1-1/4" Overall Laminated I.G.- 3/16" Annealed Glass/ Laminated-3/16" Annealed Glass/ 0.075" Solutia Sea Storm Interlayer/ 3/16" Annealed Glass		Certification Agency Certificate FI14608_R0_C_CAC_M1010610.01.PDF FI14608_R0_C_CAC_M1010656.01.PDF Quality Assurance Contract Expiration Date 09/30/2014 Installation Instructions FI14608_R0_II_EAS034.pdf Verified By: Alexis Spyrou, P.E. Florida P.E. 68101 Created by Independent Third Party: Yes Evaluation Reports FI14608_R0_AE_PER_1350.pdf Created by Independent Third Party: Yes
14608.7	Series 2466 Vinyl Impact Rated	Fixed Window with Flange
Limits of Use Approved for use in HVHZ: No Approved for use outside HVHZ: Yes Impact Resistant: Yes Design Pressure: +60/-60 Other: Configuration: O Max. Frame Size: W-64" H-84" Max. DLO Size: W-58.5" H-79" Glazing: 1-1/4" Overall Laminated I.G.- 3/16" Annealed Glass/ Laminated-3/16" Annealed Glass/ 0.075" Solutia Sea Storm Interlayer/ 3/16" Annealed Glass		Certification Agency Certificate FI14608_R0_C_CAC_M1010610.01.PDF FI14608_R0_C_CAC_M1010656.01.PDF Quality Assurance Contract Expiration Date 09/30/2014 Installation Instructions FI14608_R0_II_EAS035.pdf Verified By: Alexis Spyrou, P.E. Florida P.E. 68101 Created by Independent Third Party: Yes Evaluation Reports FI14608_R0_AE_PER_1351.pdf Created by Independent Third Party: Yes

[Back](#) [Next](#)

Contact Us :: 1940 North Monroe Street, Tallahassee, FL 32399

The State of Florida is an A/EEO employer. Copyright 2007-2010 State of Florida :: Privacy Statement :: Accessibility Statement :: Refund Statement
 Under Florida law, e-mail addresses are public records. If you do not want your e-mail address released in response to a public-records request, do not send electronic mail to this entity. Instead, contact the office by phone or by traditional mail. If you have any questions regarding DBPR's ADA web accessibility, please contact our Web Master at webmaster@dbpr.state.fl.us.

Product Approval Accepts:



EASTERN ARCHITECTURAL SYSTEMS, INC

SERIES 2000 IMPACT FIXED WINDOW

INSTALLATION NOTES:

1. ONE (1) INSTALLATION ANCHOR IS REQUIRED AT EACH ANCHOR LOCATION SHOWN.
2. THE NUMBER OF INSTALLATION ANCHORS DEPICTED IS THE MINIMUM NUMBER OF ANCHORS TO BE USED FOR PRODUCT INSTALLATION.
3. INSTALL INDIVIDUAL INSTALLATION ANCHORS WITHIN A TOLERANCE OF $\pm 1/2$ INCH OF THE DEPICTED LOCATION IN THE ANCHOR LAYOUT DETAIL (I.E., WITHOUT CONSIDERATION OF TOLERANCES). TOLERANCES ARE NOT CUMULATIVE FROM ONE INSTALLATION ANCHOR TO THE NEXT.
4. SHIM AS REQUIRED AT EACH INSTALLATION ANCHOR WITH LOAD BEARING SHIM(S). MAXIMUM ALLOWABLE SHIM STACK TO BE $1/4$ INCH. SHIM WHERE SPACE OF $1/16$ INCH OR GREATER OCCURS. SHIM(S) SHALL BE CONSTRUCTED OF HIGH DENSITY PLASTIC OR BETTER.
5. FOR INSTALLATION INTO WOOD FRAMING USE #14 WOOD SCREWS OF SUFFICIENT LENGTH TO ACHIEVE $1 1/2$ INCH MINIMUM EMBEDMENT INTO WOOD SUBSTRATE.
6. FOR INSTALLATION THROUGH 1X BUCK TO CONCRETE/MASONRY, OR DIRECTLY INTO CONCRETE/MASONRY, USE $1/4$ INCH DIAMETER ITW TAPCONS OF SUFFICIENT LENGTH TO ACHIEVE $1 1/4$ INCH MINIMUM EMBEDMENT.
7. FOR INSTALLATION INTO STEEL STUD FRAMING USE #14 SELF-TAPPING SCREWS OF SUFFICIENT LENGTH TO ACHIEVE THREE (3) THREADS MINIMUM PENETRATION BEYOND THE METAL STRUCTURE.
8. MINIMUM EMBEDMENT AND EDGE DISTANCE EXCLUDE WALL FINISHES, INCLUDING BUT NOT LIMITED TO STUCCO, FOAM, BRICK VENEER, AND SIDING.
9. INSTALLATION ANCHORS AND ASSOCIATED HARDWARE MUST BE MADE OF CORROSION RESISTANT MATERIAL OR HAVE A CORROSION RESISTANT COATING.
10. FOR GROUT FILLED BLOCK, DO NOT INSTALL INSTALLATION ANCHORS INTO MORTAR JOINTS. EDGE DISTANCE IS MEASURED FROM FREE EDGE OF BLOCK OR EDGE OF MORTAR JOINT INTO FACE SHELL OF BLOCK.
11. INSTALLATION ANCHORS SHALL BE INSTALLED IN ACCORDANCE WITH ANCHOR MANUFACTURER'S INSTALLATION INSTRUCTIONS, AND ANCHORS SHALL NOT BE USED IN SUBSTRATES WITH STRENGTHS LESS THAN THE MINIMUM STRENGTH SPECIFIED BY THE ANCHOR MANUFACTURER.
12. INSTALLATION ANCHOR CAPACITIES FOR PRODUCTS HEREIN ARE BASED ON SUBSTRATE MATERIALS WITH THE FOLLOWING PROPERTIES:
 - A. WOOD - MINIMUM SPECIFIC GRAVITY OF 0.55.
 - B. CONCRETE - MINIMUM COMPRESSIVE STRENGTH OF 2700 PSI.
 - C. MASONRY - STRENGTH CONFORMANCE TO ASTM C-90, GRADE N, TYPE 1 (OR GREATER).
 - D. STEEL - MINIMUM TENSILE YIELD STRENGTH OF 33 KSI.

GENERAL NOTES:

1. THE PRODUCT SHOWN HEREIN IS DESIGNED AND MANUFACTURED TO COMPLY WITH THE CURRENT FLORIDA BUILDING CODE (FBC), INCLUDING HVHZ AND HAS BEEN EVALUATED ACCORDING TO THE FOLLOWING:
 - TAS 201-94
 - TAS 202-94
 - TAS 203-94
2. ADEQUACY OF THE EXISTING STRUCTURAL CONCRETE/MASONRY AND 2X FRAMING AS A MAIN WIND FORCE RESISTING SYSTEM CAPABLE OF WITHSTANDING AND TRANSFERRING APPLIED PRODUCT LOADS TO THE FOUNDATION IS THE RESPONSIBILITY OF THE ENGINEER OR ARCHITECT OF RECORD FOR THE PROJECT OF INSTALLATION.
3. 1X AND 2X BUCKS (WHEN USED) SHALL BE DESIGNED AND ANCHORED TO PROPERLY TRANSFER ALL LOADS TO THE STRUCTURE. BUCK DESIGN AND INSTALLATION IS THE RESPONSIBILITY OF THE ENGINEER OR ARCHITECT OF RECORD FOR THE PROJECT OF INSTALLATION.
4. THE INSTALLATION DETAILS DESCRIBED HEREIN ARE GENERIC AND MAY NOT REFLECT ACTUAL CONDITIONS FOR A SPECIFIC SITE. IF SITE CONDITIONS CAUSE INSTALLATION TO DEVIATE FROM THE REQUIREMENTS DETAILED HEREIN, A LICENSED ENGINEER OR ARCHITECT SHALL PREPARE SITE SPECIFIC DOCUMENTS FOR USE WITH THIS DOCUMENT.
5. APPROVED IMPACT PROTECTIVE SYSTEM IS **NOT REQUIRED** ON THIS PRODUCT IN AREAS REQUIRING IMPACT RESISTANCE.
6. WINDOW FRAME MATERIAL: 6063-T5 ALUMINUM
7. GLASS MEETS THE REQUIREMENTS OF ASTM E 1300-04 GLASS CHARTS. SEE SHEET 3 FOR GLAZING DETAIL.
8. DESIGNATIONS "X" AND "O" STAND FOR THE FOLLOWING:
 - X: OPERABLE PANEL
 - O: FIXED PANEL

TABLE OF CONTENTS		
SHEET	REVISION	SHEET DESCRIPTION
1	-	INSTALLATION & GENERAL NOTES
2	-	ELEVATION & ANCHOR LAYOUT
3	-	VERTICAL SECTIONS & GLAZING DETAIL
4	-	COMPONENTS & BILL OF MATERIALS

DESIGN PRESSURE RATING	
DESIGN PRESSURE	MISSILE IMPACT RATING
+90 PSF / -90 PSF	LARGE AND SMALL MISSILE IMPACT

Digitally signed by Alex Spyrou
Reason: I am approving this document
Date: 2011.06.30 16:01:41 -04'00'

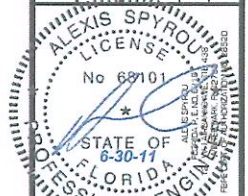


EASTERN ARCHITECTURAL SYSTEMS
10030 BAVARIA ROAD
FT MYERS, FL 33913
PH: (800) 432-2204 FX: (239) 369-2412

TITLE: SERIES 2000 FIXED
INSTALLATION
& GENERAL NOTES

PREPARED BY:
CERTWORKS, LLC
127 W. FAIRBANKS AVE., STE. 438
WINTER PARK, FL 32789
PH: (407) 644-6957 FX: (407) 644-2366

REVISIONS	DATE	BY	DESCRIPTION
	NO.		

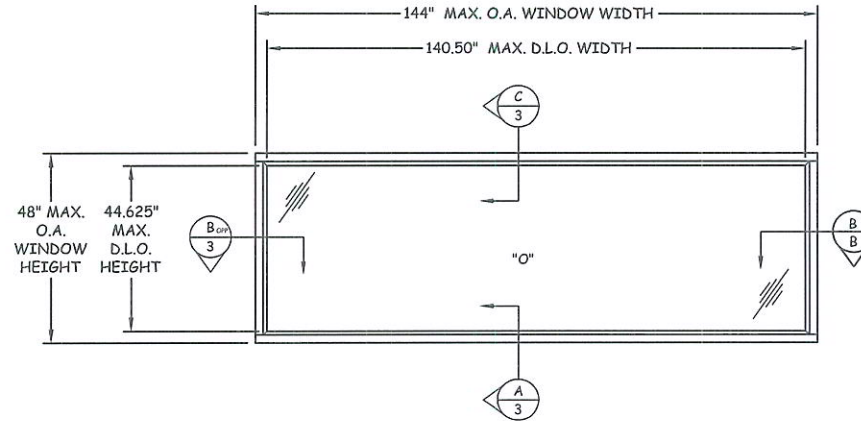


DATE: 4.05.11
DWN BY: JLA
CHK BY: HFN
SCALE: NTS

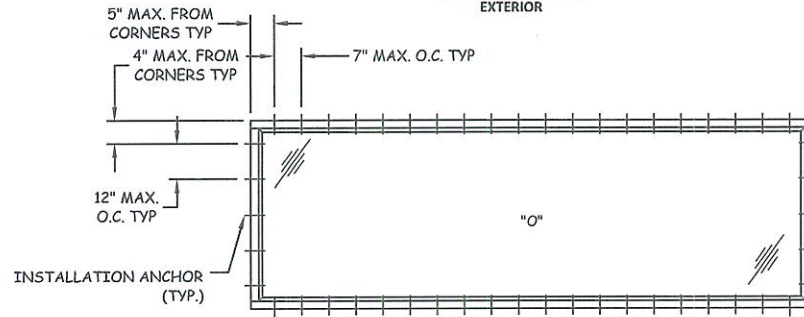
DWG #:
EAS015
SHEET: 1 OF 4



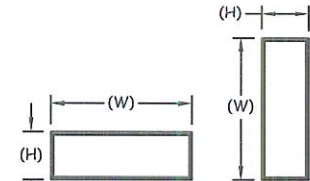
EASTERN ARCHITECTURAL SYSTEMS
10030 BAVARIA ROAD
FT MYERS, FL 33913
PH: (800) 432-2204 FX: (239) 369-2412



ELEVATION
EXTERIOR



ANCHOR LAYOUT
FLANGE



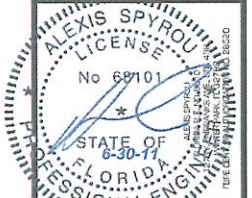
NOTE:
WINDOW WIDTH (W) AND HEIGHT
(H) ARE INTERCHANGEABLE.

TITLE: SERIES 2000 FIXED
ELEVATION
& ANCHOR LAYOUT

PREPARED BY:
CERTWORKS, LLC
127 W. FAIRBANKS AVE., STE. 438
WINTER PARK, FL 32789
PH: (407) 644-6957 FX: (407) 644-2366

REVISIONS

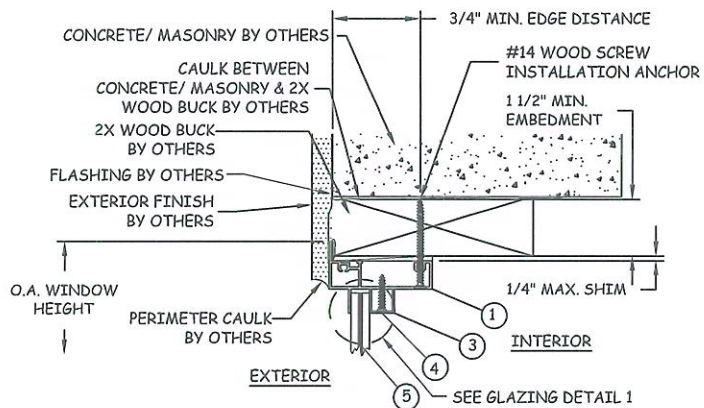
NO.	DESCRIPTION	BY	DATE



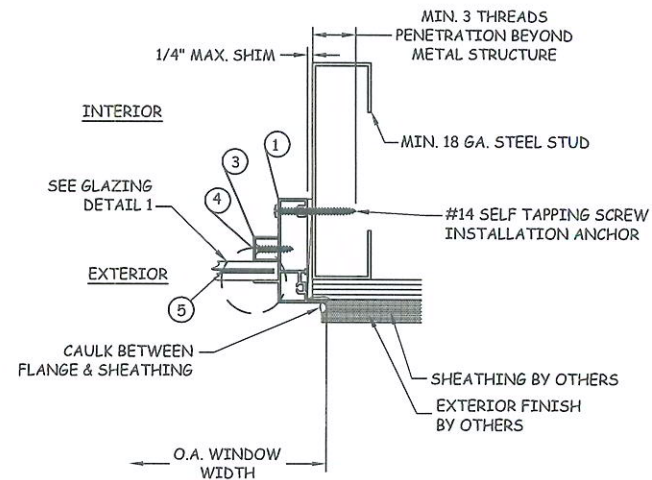
DATE: 4.05.11
DWN BY: JLA
CHK BY: HFN
SCALE: NTS

DWG #: **EAS015**

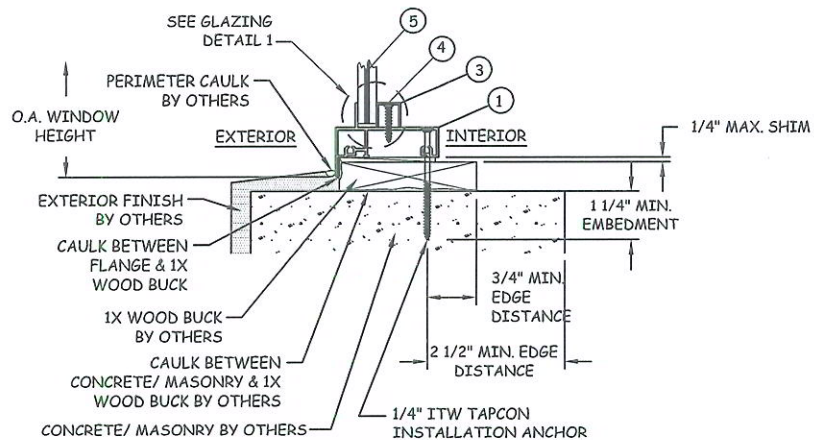
SHEET: **2 OF 4**



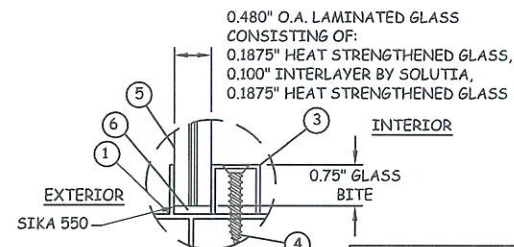
C
3 **VERTICAL SECTION**
HEAD - CONCRETE/MASONRY



B
3 **HORIZONTAL SECTION**
JAMB - 2X METAL STUD



A
3 **VERTICAL SECTION**
SILL - CONCRETE/MASONRY



GLAZING DETAIL 1

**GLAZING CHANNEL ASSEMBLY
FASTENER SPACING**

- HEAD/SILL: 4.50" IND., 12" O.C.
- JAMBS: 5.50" IND., 15" O.C.



EASTERN ARCHITECTURAL SYSTEMS
10030 BAYVIA ROAD
FT. MYERS, FL 33913
PH: (800) 432-2204 FX: (239) 369-2412

TITLE: SERIES 2000 FIXED
VERTICAL SECTIONS
& GLAZING DETAIL
PREPARED BY:
CERTWORKS, LLC
127 W. FAIRBANKS AVE., STE. 438
WINTER PARK, FL 32789
PH: (407) 644-6997 FX: (407) 644-2366

REVISIONS

NO.	DESCRIPTION	BY	DATE



DATE: 4.05.11
DWG BY: JLA
CHK BY: HFN
SCALE: NTS
DWG #: **EAS015**
SHEET: **3 OF 4**



EASTERN ARCHITECTURAL SYSTEMS
10030 BAVARIA ROAD
FT MYERS, FL 33913
PH: (800) 432-2204 FX: (239) 369-2412

TITLE: SERIES 2000 FIXED
COMPONENTS
& BILL OF MATERIALS

PREPARED BY:
CERTWORKS, LLC
127 W. FAIRBANKS AVE., STE. 438
WINTER PARK, FL 32789
PH: (407) 644-6957 FX: (407) 644-2366

REVISIONS

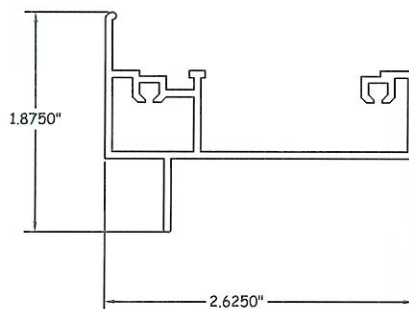
NO.	DESCRIPTION	BY	DATE



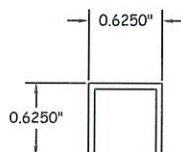
DATE: 4.05.11
DWN BY: JLA
CHK BY: HFN
SCALE: NTS

DWG #: **EAS015**
SHEET: **4 OF 4**

① FRAME HEAD, SILL & JAMB
0.060" TYP WALL THICKNESS



③ U CHANNEL GLAZING BEAD
0.050" TYP WALL THICKNESS



BILL OF MATERIALS		
NO	DESCRIPTION	MATERIAL
1	FRAME HEAD, SILL & JAMB	
2	NOT USED	
3	U CHANNEL GLAZING BEAD	
4	#10 X 1" PHILLIPS FLAT HEAD SCREW	
5	0.480" O.A. LAMINATED GLASS CONSISTING OF: 0.1875" HEAT STRENGTHENED GLASS, 0.100" INTERLAYER BY SOLUTIA, 0.1875" HEAT STRENGTHENED GLASS	